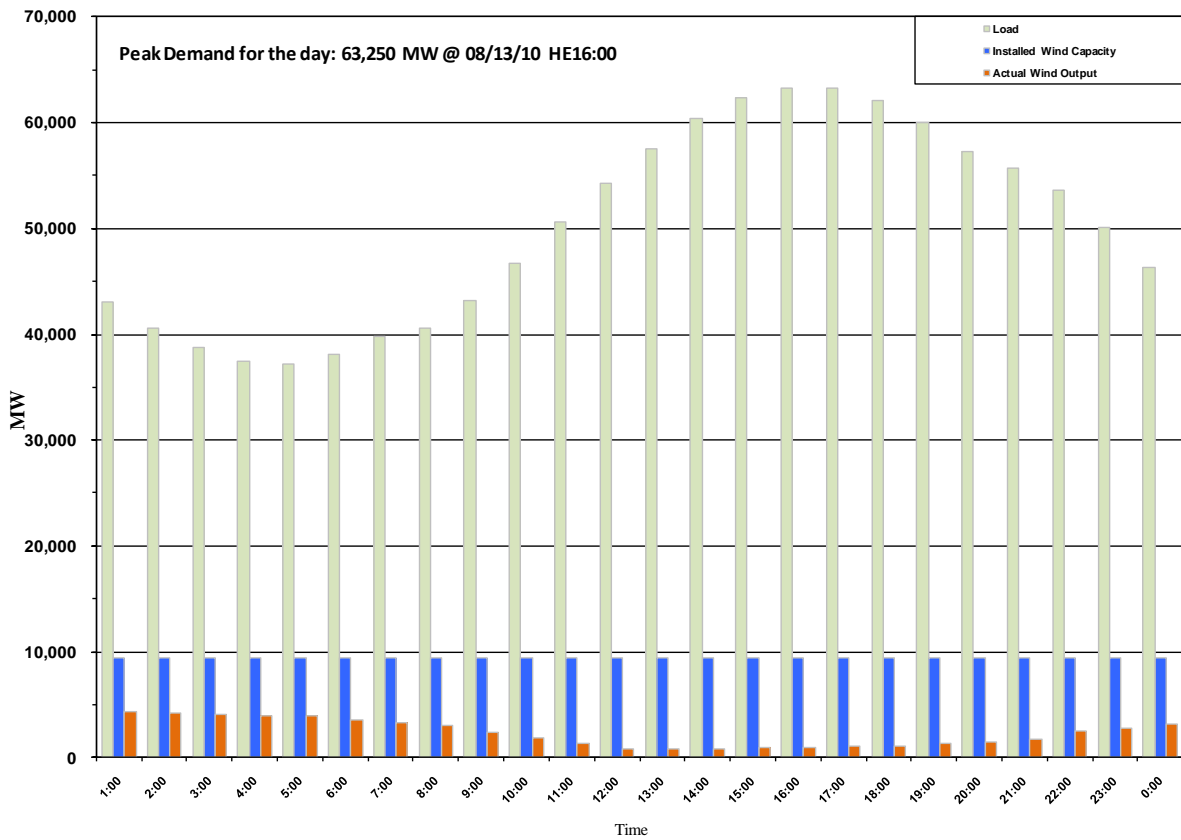




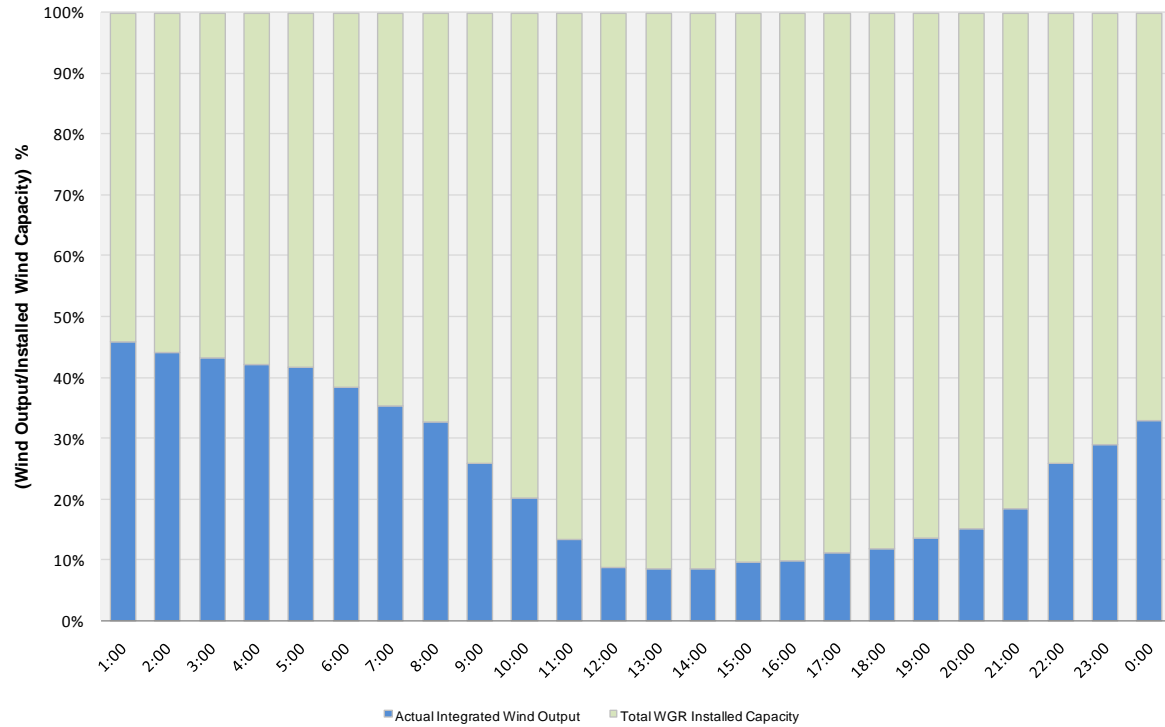
ERCOT Grid Operations Wind Penetration Report: 08/13/10

Peak Load	63,250 MW
Load Peak Hour	16
Wind Record 06/12/10	7016 MW
Max Wind value	4497 MW
Wind Peak Hour	00:52:32
Wind Penetration %	10.70

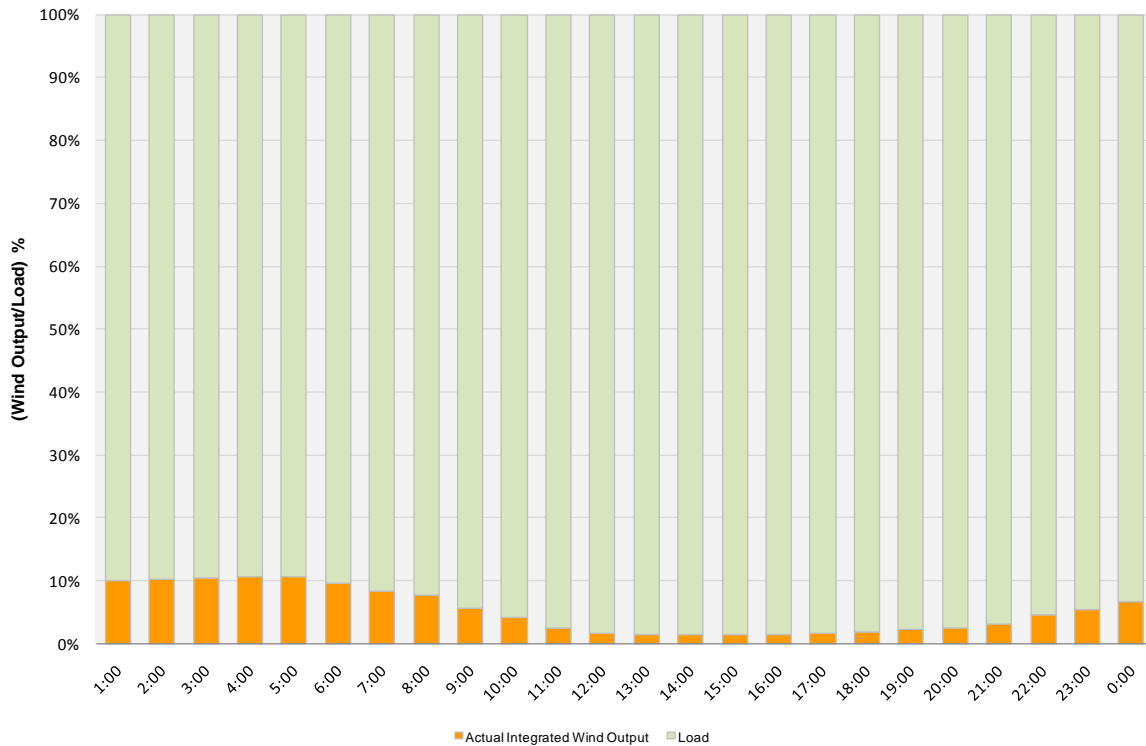




Actual Wind Output as a Percentage of the Total Installed Wind Capacity 08/13/2010



Actual Wind Output as a Percentage of the ERCOT Load 08/13/2010





ERCOT Load vs. Actual Wind Output 08/06/10 - 08/13/10

